



55 Acres

Hundman  
Lumber

Widmer  
Interiors

ALTON DR

CMEI  
Group

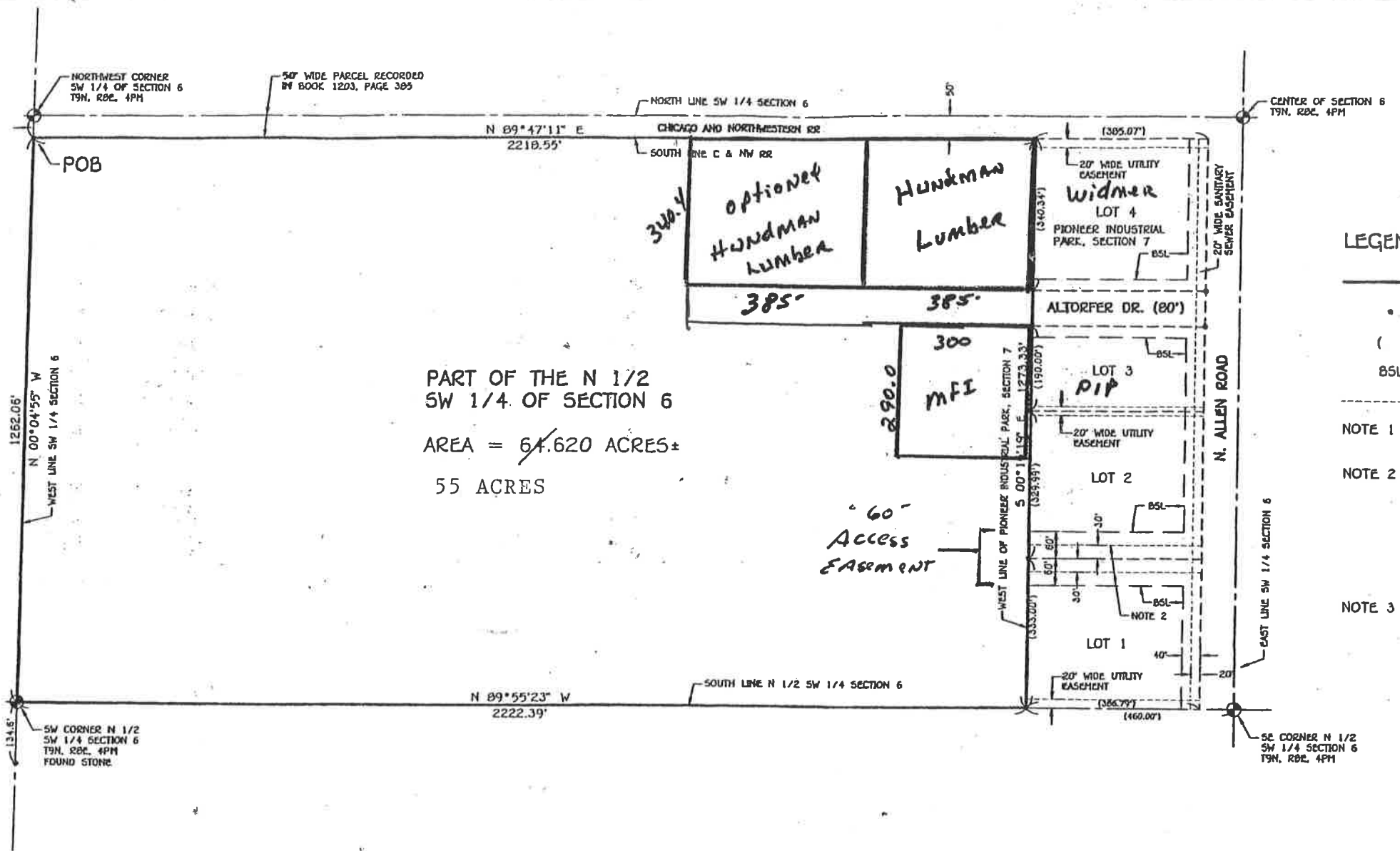
PIP Printing

Multitenant  
Retail Center

PIONEER INDUSTRIAL PARK SEC 7

ALLEN





**LEGEND**

- BOUND
- IRON P
- ( ) PLAT C
- BSL BUILDING
- - - - - EASEMENT
- NOTE 1 BEARINGS E DATUM.
- NOTE 2 INGRESS-EJECTMENT FAVOR OF INDUSTRIAL CREATED BY INDUSTRIAL RECORDED 90-00977 AFFIDAVIT RECORD
- NOTE 3 RIGHT OF WAY IN BOOK 3; NOT AFFECT

PART OF THE N 1/2  
SW 1/4 OF SECTION 6  
AREA = 64.620 ACRES ±  
55 ACRES

**SURVEYOR'S CERTIFICATE**

STATE OF ILLINOIS )  
COUNTY OF PEORIA ) 55

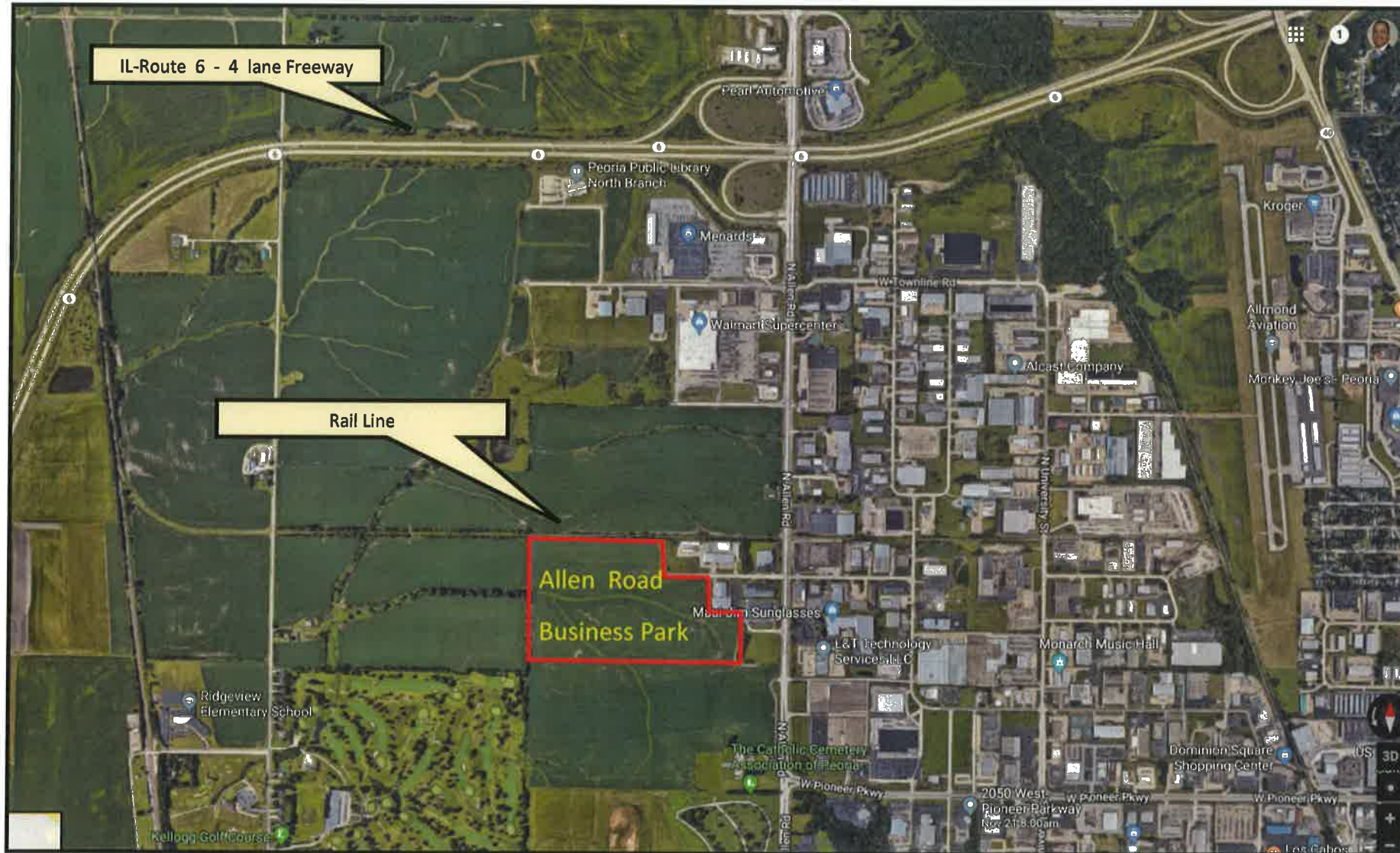
WE, THE AUSTIN ENGINEERING CO., INC., CIVIL ENGINEERS AND LAND SURVEYORS, DO HEREBY

**LEGAL DESCRIPTION**

A PART OF THE NORTH HALF OF THE SOUTHWEST QUARTER OF SECTION SIX, RANGE EIGHT EAST OF THE FOURTH PRINCIPAL MERIDIAN, MORE PARTICULARLY FOLLOWS:

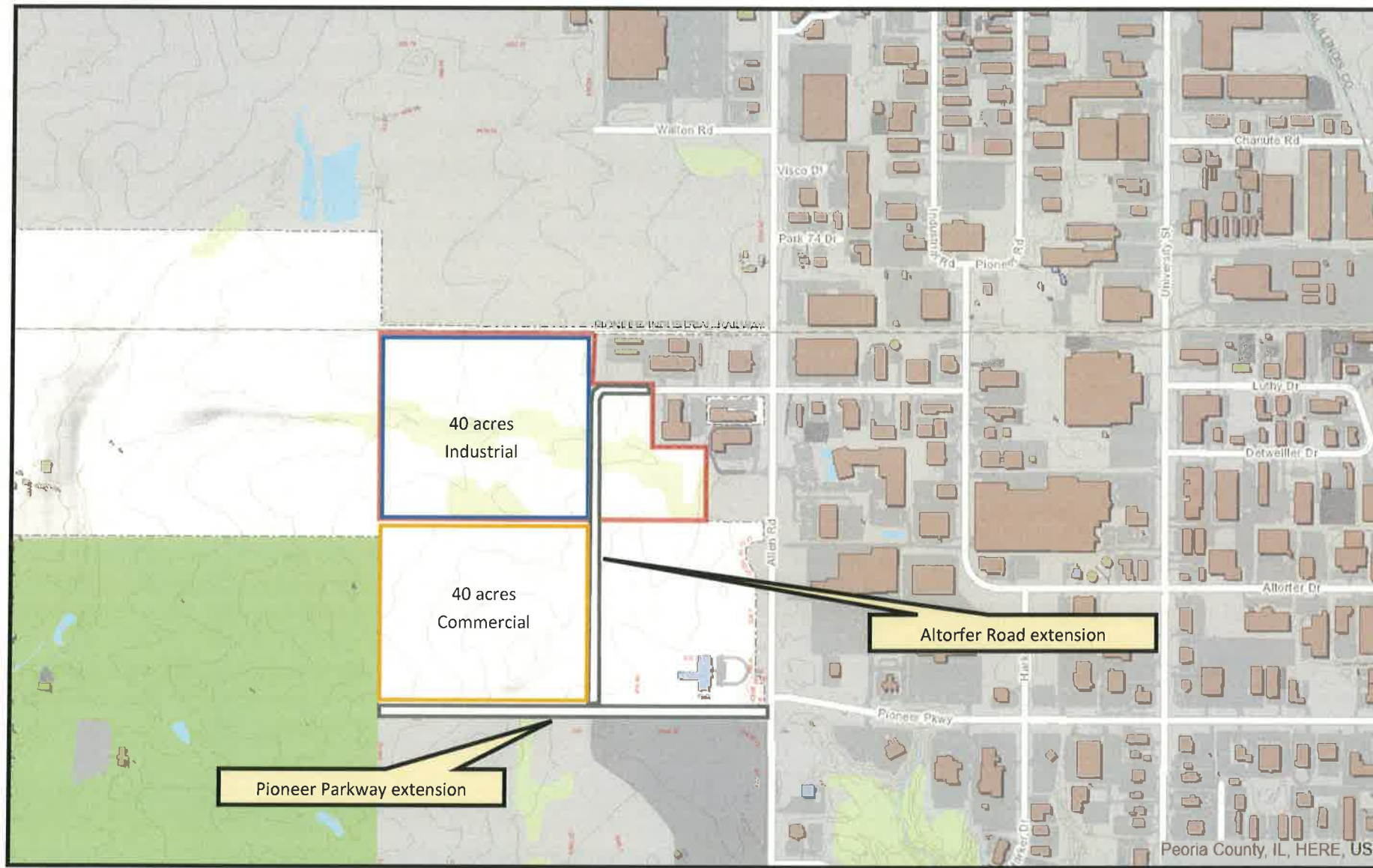


# ALLEN ROAD BUSINESS PARK Aerial Map



Allen Road Business Park - 2700 W. Altorfer Drive, Peoria IL 61615

# ALLEN ROAD BUSINESS PARK Business Park Site Plan



Allen Road Business Park - 2700 W. Altorfer Drive, Peoria IL 61615

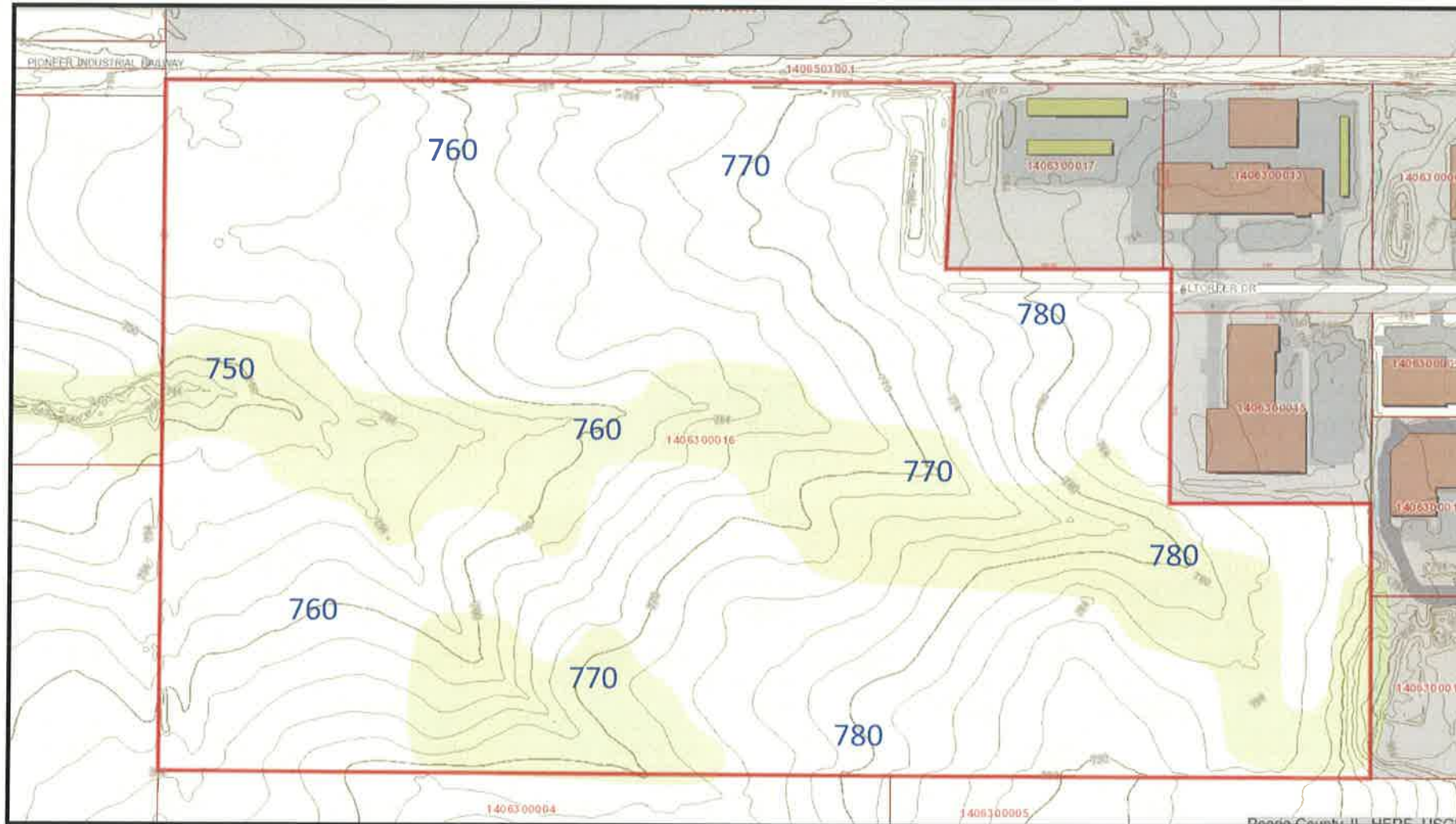


# ALLEN ROAD BUSINESS PARK Infrastructure Map



All utilities (water, sewer, storm, gas, electric) adjacent to Business Park.

# ALLEN ROAD BUSINESS PARK Topographic Map

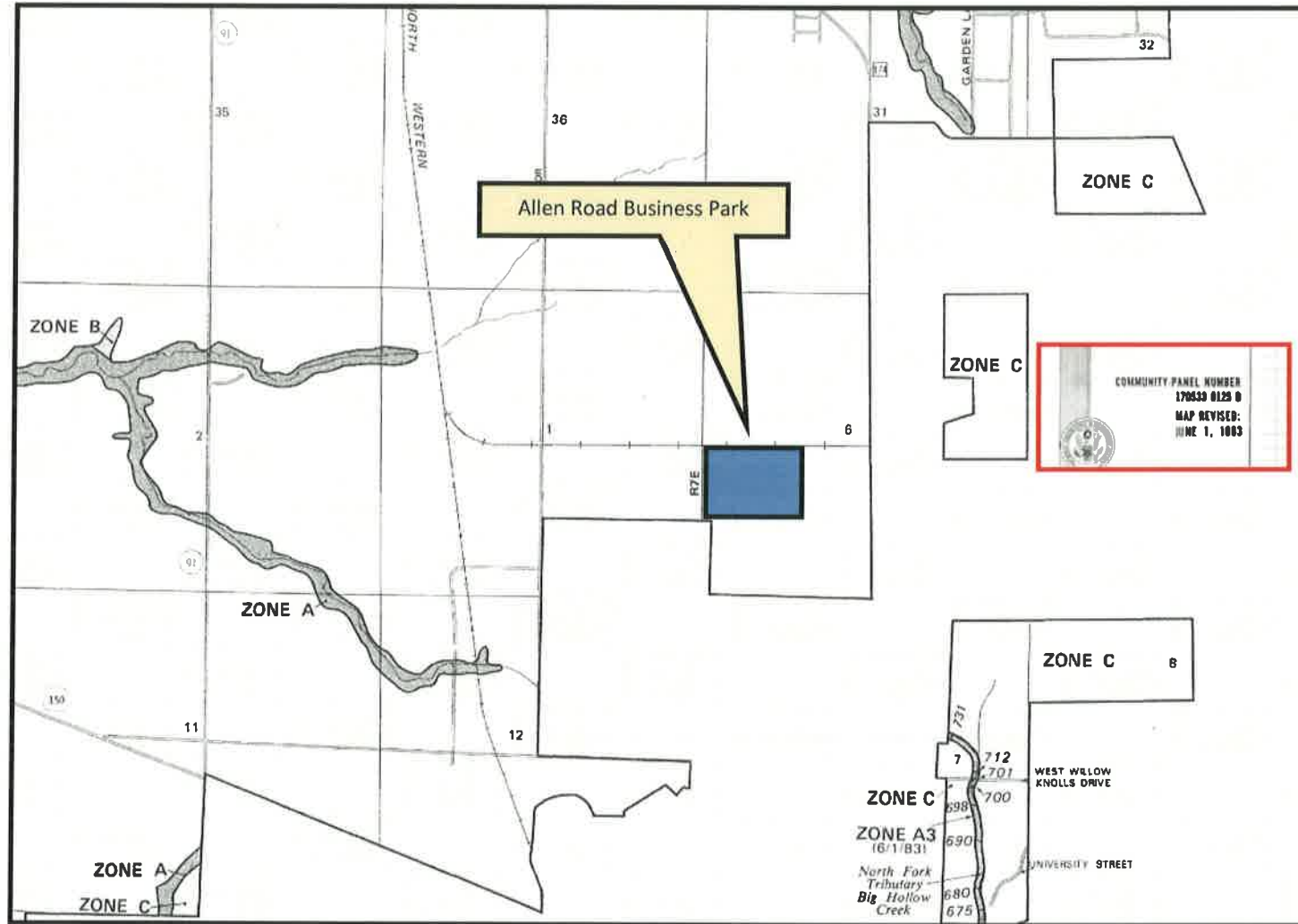


Land is relatively flat with an average slope of 1 foot for every 633 linear feet.  
With a high elevation of 780 ft on the east side of the lot to 750 to the west end over 1900 linear feet.

Allen Road Business Park - 2700 W. Altorfer Drive, Peoria IL 61615

# ALLEN ROAD BUSINESS PARK

## FEMA—Flood Insurance Rate Map



Business Park is not located in 100 or 500 year flood zone area

Allen Road Business Park - 2700 W. Altorfer Drive, Peoria IL 61615



# ALLEN ROAD BUSINESS PARK Radius Map - 0.5 miles

