



5.1 Acres

W Newell Rd

Sixteen Hwy

Bristow Pl

Bristow Pl

Stoughton Rd

Cambridge Pl

Devensby Rd

© 2012 Google

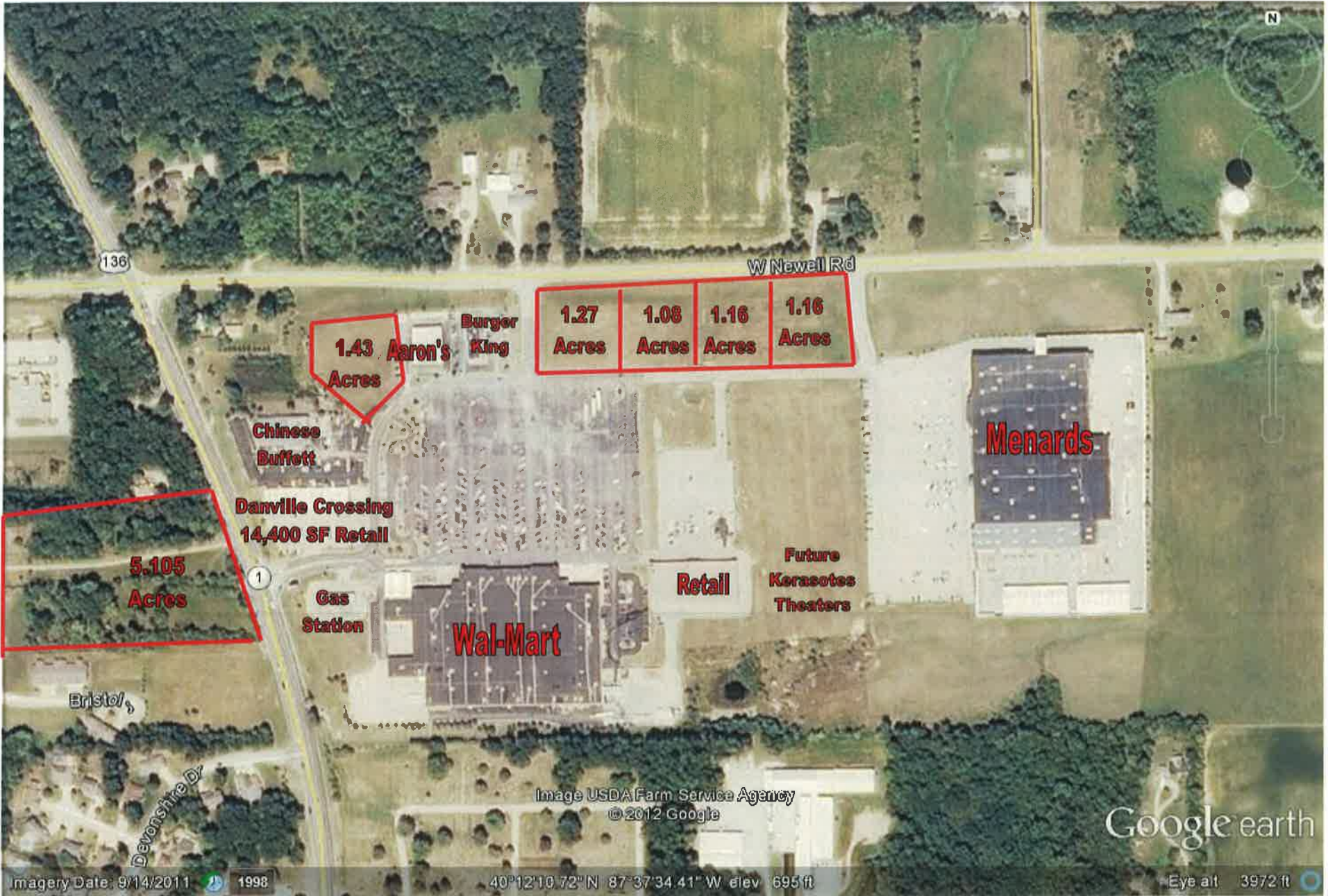
Google earth

40° 12' 08.01\" N 87° 37' 46.56\" W elev 686 ft

Eye alt 3972 ft

Imagery Date 5/14/2012 1998





1.43 Acres

1.27 Acres  
1.06 Acres  
1.16 Acres  
1.16 Acres

5.105 Acres

Danville Crossing  
14,400 SF Retail

Wal-Mart

Menards

Retail

Future  
Kerasotes  
Theaters

Gas  
Station

Image USDA Farm Service Agency  
© 2012 Google

Google earth

Imagery Date: 9/14/2011 1998

40°12'10.72" N 87°37'34.41" W elev 695 ft

Eye alt 3972 ft

PART OF LOTS 3 & 4  
 IN THE  
 PARTITION OF THE ESTATE OF MATILDA BOYER  
 SITUATED IN THE  
 N $\frac{1}{2}$ , SECTION 17, T 20 N., R 11 W  
 OF THE 2nd P.M.  
 VERMILION COUNTY, ILLINOIS



SCALE: 1" = 60'  
 Azimuths Referenced to Local Datum

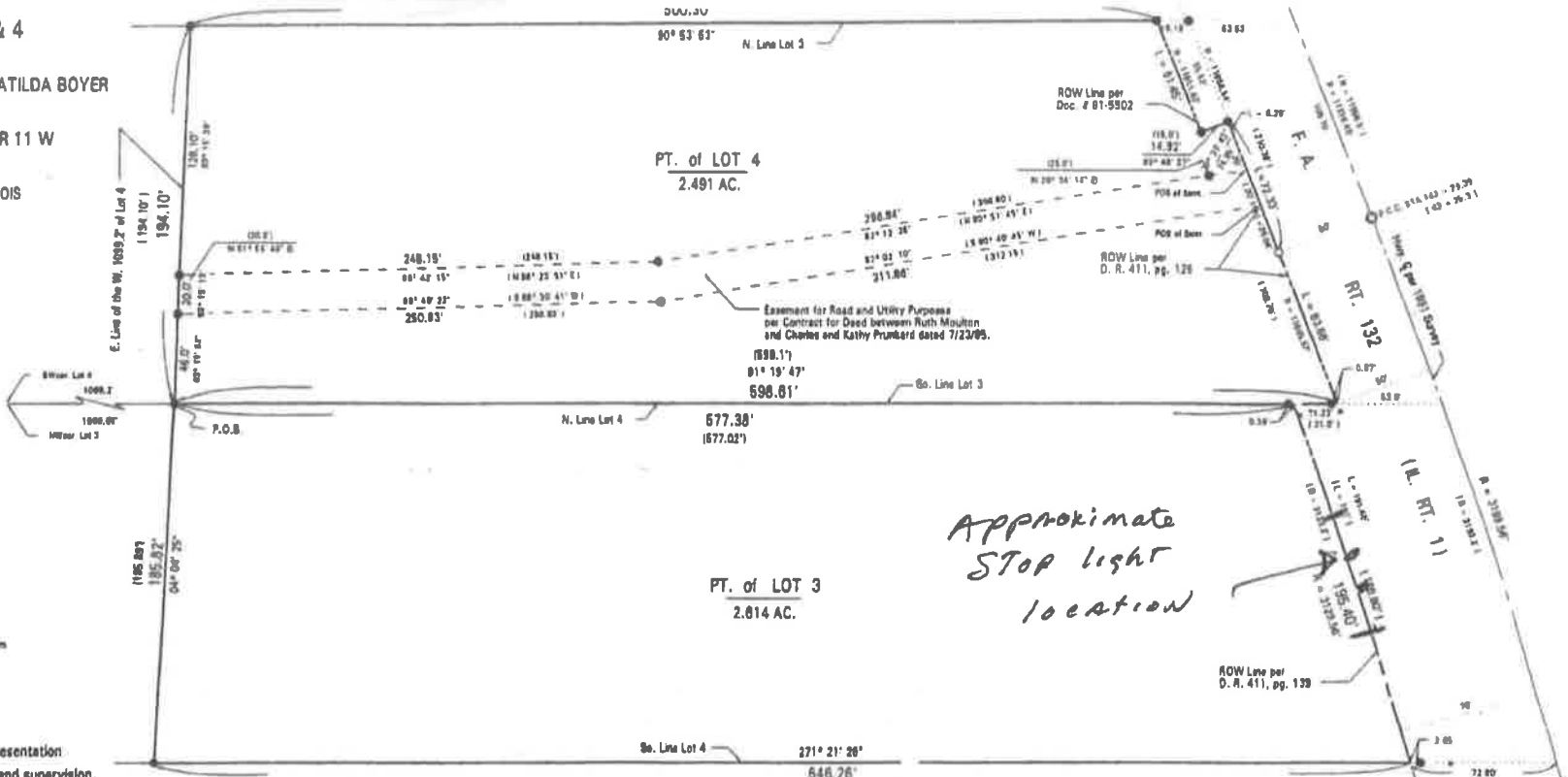
THIS WILL FURTHER CERTIFY

That the above is a true and correct representation  
 of a survey as made under my direction and supervision.  
 Dimensions are shown in feet, tenths, and hundredths.

Signed and dated in Danville, Illinois, this 20th day  
 of December, 1996.

A B LAND SURVEYING, P. C.  
 1216 N. CHEFFIN ST  
 DANVILLE, ILLINOIS

*Arthur Wolfingbarger*  
 Illinois Professional Land Surveyor No. 2219



LEGEND

- 6/8" X 24" Iron Red Bat with L.S. 2219 Identification Cap
- Iron Red Found
- ⊗ Survey Monument
- ⊕ Conc. R.O.W. Monument
- ⊖ Utility Pole
- (194.1') Reassembled Outcrop from a Dead, Plant, or Survey