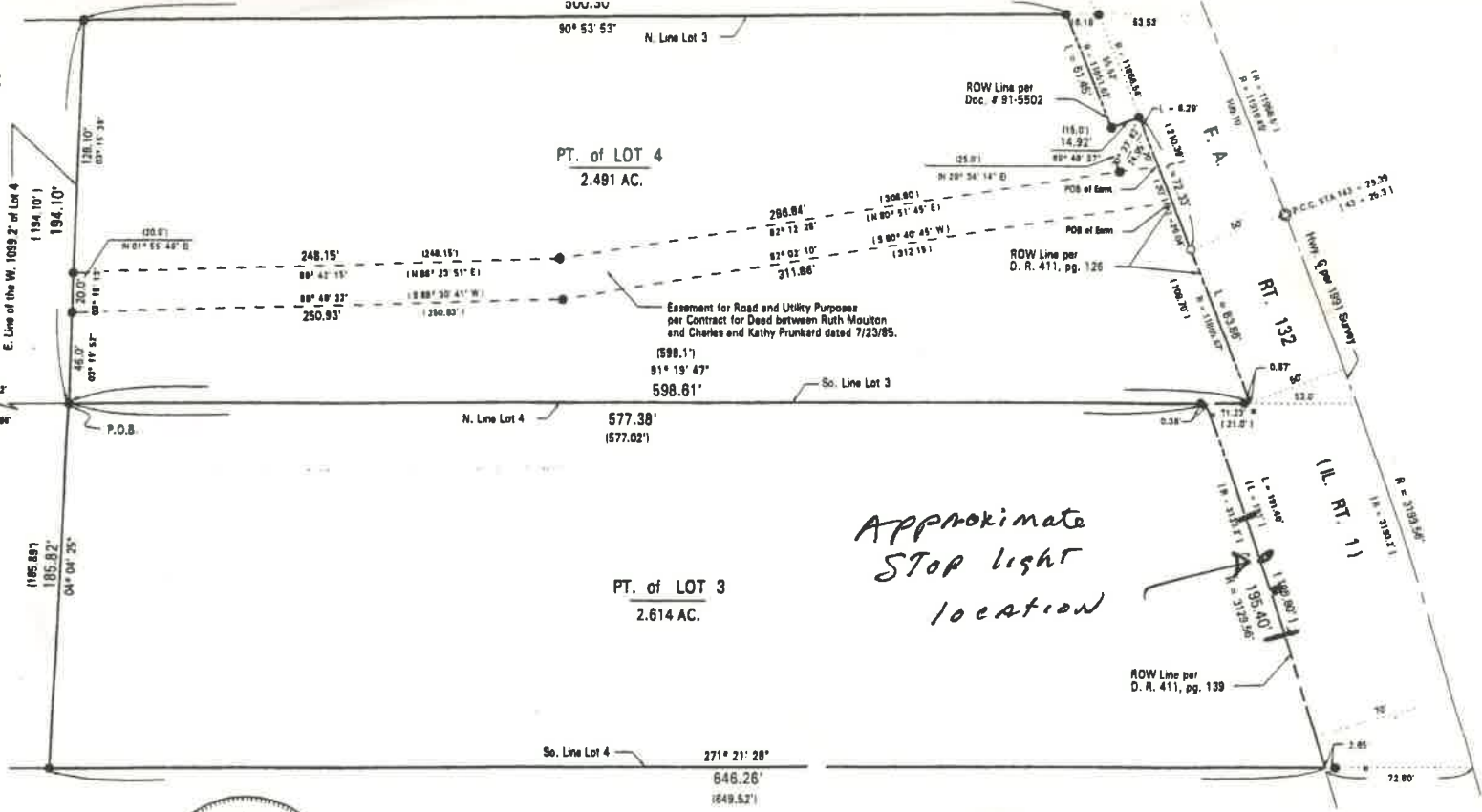


PART OF LOTS 3 & 4
 IN THE
 PARTITION OF THE ESTATE OF MATILDA BOYER
 SITUATED IN THE
 N 1/4, SECTION 17, T 20 N, R 11 W
 OF THE 2nd P.M.
 VERMILION COUNTY, ILLINOIS



SCALE: 1" = 60'
 Azimuths Referenced to Local Datum



*Approximate
 STOP light
 location*

THIS WILL FURTHER CERTIFY
 That the above is a true and correct representation
 of a survey as made under my direction and supervision.
 Dimensions are shown in feet, tenths, and hundredths.

Signed and dated in Danville, Illinois, this 20th day
 of December, 1996.



Arthur Wolfinbarger
 Illinois Professional Land Surveyor No. 2219

- LEGEND**
- 5/8" X 24" Iron Rod Set with L.S. 2219 Identification Cap
 - Iron Rod Found
 - ⊗ Survey Monument
 - ⊙ Conc. R.O.W. Monument
 - ⊕ Utility Pole
 - (194.1') Recorded Distance from a Deed, Plat, or Survey

A B LAND SURVEYING, P. C.
 1218 N. GRIFFIN ST
 DANVILLE, ILLINOIS