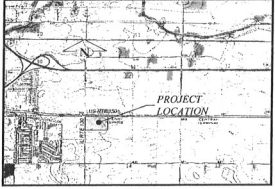


LEGEND

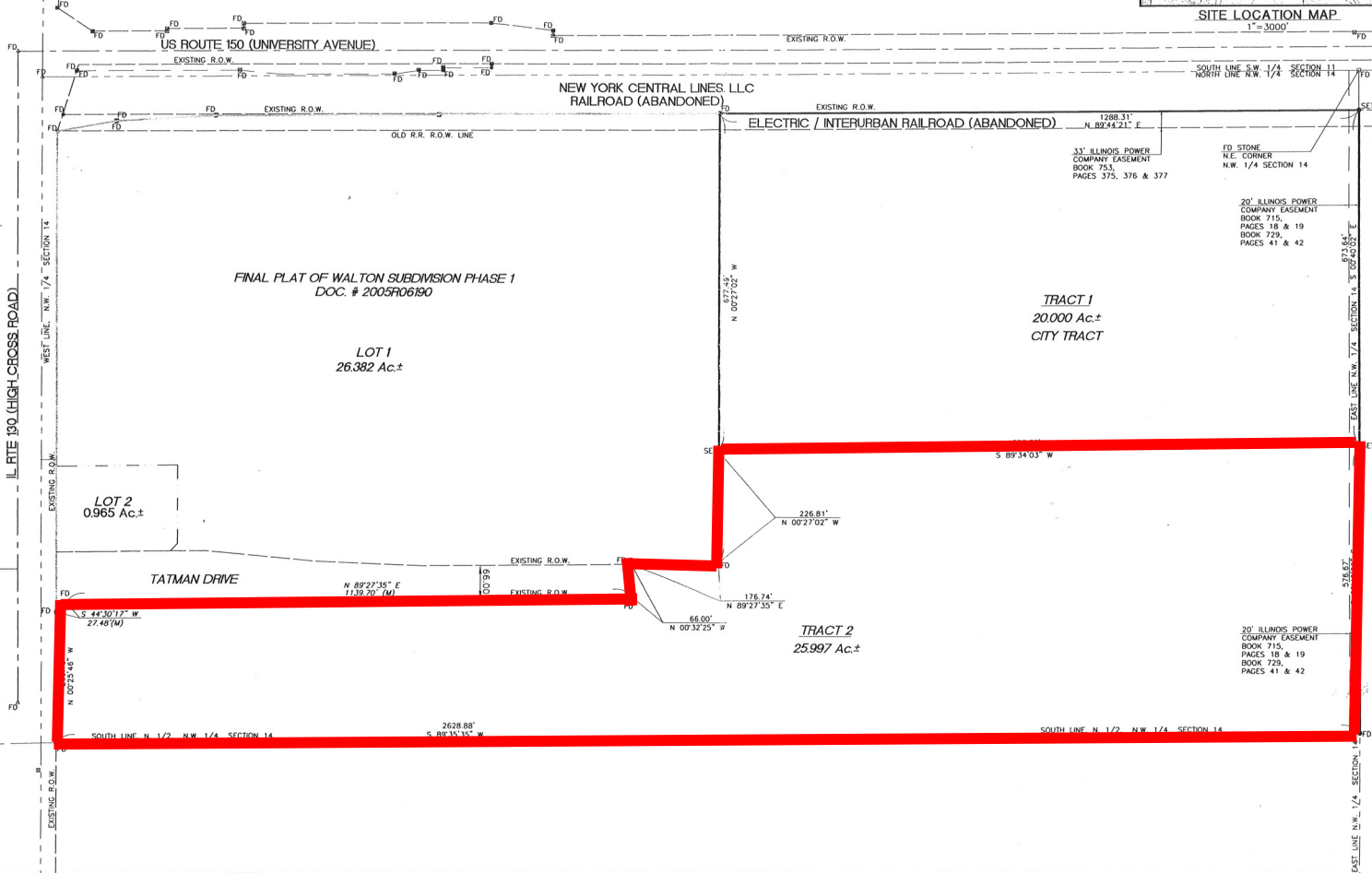
	TRACT LINES		IRON PIN
	WALTON SUBDIVISION LINE		SURVEY PLATE
	EXISTING ROW		ROW MARKER
	SECTION LINE		STONE
	EXISTING CENTERLINE	SET	SET MONUMENT
	EXISTING EASEMENT	FD	FOUND MONUMENT
	EXISTING LOT LINE		



PATH: M:\woldlandcorp\0300140\
 FILE: survey\trac1.survey.dwg
 UPRNME BY: MEM
 SURVEY BOOK # 1505
 XREF DWG:
 XREF DWG:
 DATE:

REVISIONS		
NUMBER	BY	DATE

0 1 2
 THIS BAR IS EQUAL TO 2' AT FULL SCALE (34x22).



WALDLAND CORP.

TRACT SURVEY
 PART OF THE NORTHWEST QUARTER OF SECTION 14 IN T. 19 N., R. 9 E. OF THE 3RD P.M. IN CHAMPAIGN COUNTY, ILLINOIS

CMT
 CONSULTING ENGINEERS
 License No. 14-000001
 2750 N. WASHINGTON STREET
 CHAMPAIGN, ILLINOIS 62702
 (217) 243-1400
 www.cmteng.com

SPRINGFIELD, IL • ST. LOUIS, MO • JERSEY, IL
 CHICAGO, IL • MADISON, IL

DESIGN BY:	DSE
DRAWN BY:	KN
CHECKED BY:	MEM
APPROVED BY:	DSE
DATE:	01/24/07
JOB No:	03001-40-00
SHEET	OF SHEETS